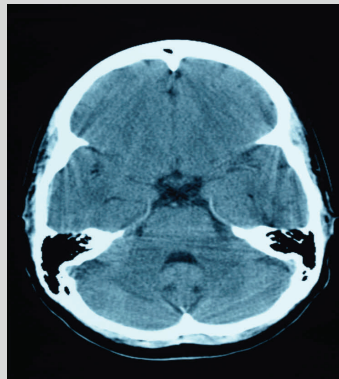


Post Professional Diploma Program

Selected Studies in ABI Course

This interprofessional course exposes students to selected topics in acquired brain injury in order to help them develop skills in the management of complex clinical, social and re-integration issues faced by survivors of acquired brain injury. Areas Covered:

- Rehabilitation paradigms
- Cognitive and behavioural sequelae of ABI
- Principles of functional and collaborative rehabilitation
- Mild brain injury
- Slow to recover patients
- Long term living and quality of life
- Behavioural assessment and management
- Teaching and rapport building
- ABI and mental health
- Psychotherapy and ABI
- The child and adolescent's brain
- Power and empowerment in rehabilitation



• **Jan 24—April 10**

• **Tuesdays 4-7 P.M.**

12 Weeks,
Credit Course in the CBS
Diploma Program

Registration Required
Tuition Fee \$455.39

**REGIONAL
REHABILITATION
CENTRE**
**Wellington St,
Hamilton**

INSTRUCTORS

Esther McEvoy, BHSc, OT Reg (Ont), Chair, Selected Studies, ABI Slow to Recover Program, Hamilton Health Sciences

John Davis, Ph.D., C.Psych., ABPP, Psychologist and Clinical Director, Brain Injury Community Re-Entry (Niagara)

Andrea Franson

Georgia Georgiou

Kristen Low

Joanne Tee, MA, MSW, RSW, CPRP, Acquired Brain Injury Program, SJH.

Eugene Uchida, Community Intervention Coordinator, Crisis Management Team, Acquired Brain Injury Program,

Diana Velikonja, PhD, Assistant Professor (PT)

TARGET AUDIENCE

Health care professionals working in hospital and community based ABI programs, case managers, insurance adjusters, legal assistants, patient advocates

Student Testimonials

“This course was very relevant to the job I do on a daily basis”

“Very interesting presenters”



Tracey Oliphant, Program Coordinator

HSC 2E12, McMaster University
1280 Main Street W,
Hamilton ON L8N 3Z5

<http://www.fhs.mcmaster.ca/cbs/>

Phone: 905-525-9140 xt 22706

Fax: 905-528-4727

E-mail: cbs@mcmaster.ca

http://twitter.com/ClinBehSci_Mac