

June 13<sup>th</sup> – 15<sup>th</sup>, 2018

Royal Botanical Gardens

680 Plains Road West, Burlington, ON

FREE PARKING

The Division of Palliative Care Presents

# 3 Days in Palliative Care

AN IN DEPTH LEARNING EXPERIENCE

## Planning Committee

**Nadia R. Plach, MD, PhD, CCFP, FCFP**  
CO-CHAIR  
Palliative Care Consultant  
Joseph Brant Hospital  
Associate Professor  
Division of Palliative Care  
Department of Family Medicine  
McMaster University, Hamilton, ON

**Kathleen Willison, RN, MSc, CHPCN(C)**  
CO-CHAIR  
Clinical Nurse Specialist  
Palliative Care  
St. Joseph's Healthcare Hamilton  
Assistant Clinical Professor  
School of Nursing and  
Associate Member  
Division of Palliative Care  
Department of Family Medicine  
McMaster University, Hamilton, ON

**Teri Crockford, RN, BScN, MS, CHPCN(c)**  
Clinical Nurse Specialist  
Assistant Clinical Professor  
School of Nursing and  
Associate Member  
Division of Palliative Care  
Department of Family Medicine  
McMaster University, Hamilton, ON

**Hun-Je Park, MD**  
Palliative Care Consultant  
Joseph Brant Hospital  
Juravinski Hospital  
Assistant Clinical Professor (Adjunct)  
Division of Palliative Care  
Department of Family Medicine  
McMaster University, Hamilton, ON

**Tracy MacKinnon, BA**  
Education Program Associate  
Division of Palliative Care  
Department of Family Medicine  
McMaster University, Hamilton, ON

**Valerie Spironello, MSW, RSW**  
Social Worker  
Assistant Clinical Professor (Adjunct)  
Division of Palliative Care  
Department of Family Medicine  
McMaster University, Hamilton, ON

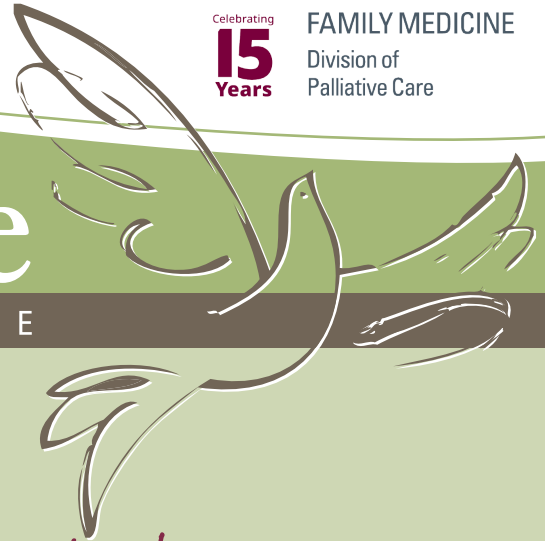
**Carol Sweeney, BA, BSW, RSW**  
Social Worker  
St. Joseph's Healthcare Hamilton  
Assistant Clinical Professor (Adjunct)  
Division of Palliative Care  
Department of Family Medicine  
McMaster University, Hamilton, ON

**Ann Vander Berg, MTS, RP**  
Chaplain, Spiritual Care Specialist  
Juravinski Hospital and Cancer Centre  
Hamilton Health Sciences  
Assistant Clinical Professor (Adjunct)  
Division of Palliative Care  
Department of Family Medicine  
McMaster University, Hamilton, ON

**Robert Vukovich, BScPhm, Pharm D, CGP**  
Consultant Pharmacist  
Classic Care Pharmacy  
A Division of Centric Health, Burlington, ON

**Angela Silla**  
CHSE Acting Program Manager  
Continuing Health Sciences Education  
McMaster University, Hamilton, ON

**Natalie Park**  
CHSE Coordinator  
Continuing Health Sciences Education  
McMaster University, Hamilton, ON



## Learning Objectives

By attending this activity, participants will be able to:

- Manage complex physical, emotional, ethical and social issues, including pediatric to geriatric populations.
- Develop enhanced collaborative practice skills and forge new inter-professional relationships.
- Apply a palliative approach in end of life care for cancer and chronic end-stage illnesses, including cardiac, renal, respiratory and neurological conditions.

## Target Audience

Health Care Professionals (Physicians, Nurses, Spiritual Care Providers, Social Workers and other disciplines) who:

- Are providing a palliative approach to care within various settings: Primary Care, Long Term Care, Acute Care, Home Care and Hospice.
- Have completed or plan to complete the Pallium LEAP (Learning Essential Approaches to Palliative and End-of-Life Care) prior to June.

[www.fhs.mcmaster.ca/palliativecare/leap.html](http://www.fhs.mcmaster.ca/palliativecare/leap.html)

[www.fhs.mcmaster.ca/conted/palliativecare.html](http://www.fhs.mcmaster.ca/conted/palliativecare.html)

For More Information

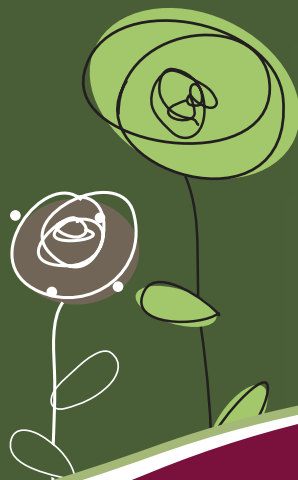
NATALIE PARK, CHSE Coordinator

McMaster University, Continuing Health Sciences Education  
905-525-9140 ext. 20763 • [parkna@mcmaster.ca](mailto:parkna@mcmaster.ca)



# Agenda 2018

- *Advanced Cancer Pain & Symptom Management*
- *Meeting the Palliative Care Needs of the Frail Elderly*
- *Medical Marijuana*
- *Palliative Care in Pediatrics*
- *End of Life Cardiac Care*
- *Bereavement Support*
- *Skilled Conversations at End of Life*
- *Nephrology at End of Life Care*
- *Palliative Approach in Addiction*
- *Palliative Care Approach to MAID*
- *Music Therapy & Legacy*



# Testimonials

“Excellent course - Time and money well spent.”

“Absolutely wonderful speakers! Great interactive opportunities.”

“I loved all the aspects to this conference/workshop.”

“A wonderful and very informative 3 days!”

“Food was fabulous for all 3 days and the location was perfect, both environment and season.”

The Royal Botanical Gardens is located at 680 Plains Road West, on the border of Burlington and Hamilton in Ontario, Canada.

## Directions

### From Toronto and East

- Queen Elizabeth Way to Highway 403 West (Hamilton).
- Exit at Waterdown Road. Travel 800 metres south along Waterdown Road to Plains Road West.
- Turn right onto Plains Road West and travel 2km.
- Turn left into the RBG parking lot.

### From Kitchener-Waterloo and West including Detroit (U.S.A.)

- Highway 401 East to Highway 6 South.
- Follow Highway 6 South for about 25 km.
- Exit onto York Road, make a left and then a right on the new Plains Road and drive south crossing over the 403.
- Turn left at the lights to continue on Plains Road West for about 1 km, passing the glass building.
- Turn right into the RBG parking lot.

### From the Niagara Region and Buffalo (U.S.A.)

- Queen Elizabeth Way to Highway 403 West (Hamilton).
- Exit at Waterdown Road.
- Travel 800 metres south along Waterdown Road to Plains Road West.
- Turn right onto Plains Road West and travel 2km.
- Turn right into the RBG parking lot.

3 Days in  
**Palliative Care**  
AN IN DEPTH LEARNING EXPERIENCE



## For Family Physicians

This course has been developed in keeping with the Ontario Ministry of Health's goal to provide Palliative Care education for Family Physicians that:

- *Enhances skill & knowledge in order to maximize the quality of life in patients who require palliative care*
- *Recognizes the primacy of care recipients & their families*
- *Facilitates & mobilizes the development of community support networks*

## Format

Combination of lectures & small group workshops in an informal, comfortable, retreat-like setting. Presenters & Resource Leaders will include specialists in Palliative Care, Ethics, Law, Social Work, Spirituality, Oncology & others.

## Liability

Continuing Health Sciences Education (CHSE) hereby assumes no liability for any claims, personal injury, or damage:

- *To any individual attending this activity.*
- *That may result from the use of technologies, program, products &/or services at this activity.*
- *That may arise out of, or during this activity.*

## Disclosure of Potential Conflicts of Interest

In keeping with accreditation guidelines, McMaster University, Continuing Health Sciences Education Program requires all speakers and planning committee members participating in this event to disclose any involvement with industry or other organizations that may potentially influence the presentation of the educational materials or program being offered. Disclosure must be done verbally and using a slide prior to the speaker's presentation.

## Cancellation Policy

McMaster University reserves the right to cancel a course due to insufficient registration or any circumstances that are beyond our control. Cancellations received before **Wednesday, May 23, 2018** will be refunded less a 25% administrative fee to a maximum of \$50.00. No refunds will be issued for cancellations received after this date.

## Confirmation of Registration

A receipt confirming of your registration will be sent prior to the course via email. Your registration is not complete unless a confirmation email is received. If you have not received a confirmation within 7 days of registration, please contact the CHSE office.

## Activity Package

As the registrant your activity package includes {breakfast, nutritional breaks, and lunch} Your activity lanyard must be worn at all times throughout the day. If you have a guest accompanying you to the activity, their meals are at their own cost and will be billed directly.

## Photography

Candid photos may be taken at the activity. Your registration implies your permission for these photos to be used for promotional material. Individuals in photographs will not be identified.



